

Jones County Marie Krutzfield Recorder
 Fee Book 2013 1992
 07/31/2013 @1243PM # Pages 1
 ZSC SEC COR CERT
 Total Fees: \$7.00

Prepared by: SCHNEIDER Land Surveying and Planning, Inc. P.O. Box 128 Farley, Iowa 52046 563-744-3631

UNITED STATES PUBLIC LAND SURVEY CORNER CERTIFICATE OF

Land Survey Monuments situated in Section 1, Township 84 North, Range 1 West of the Fifth Principal Meridian, Jones County, Iowa.
 Previously recorded (NONE OF RECORD)

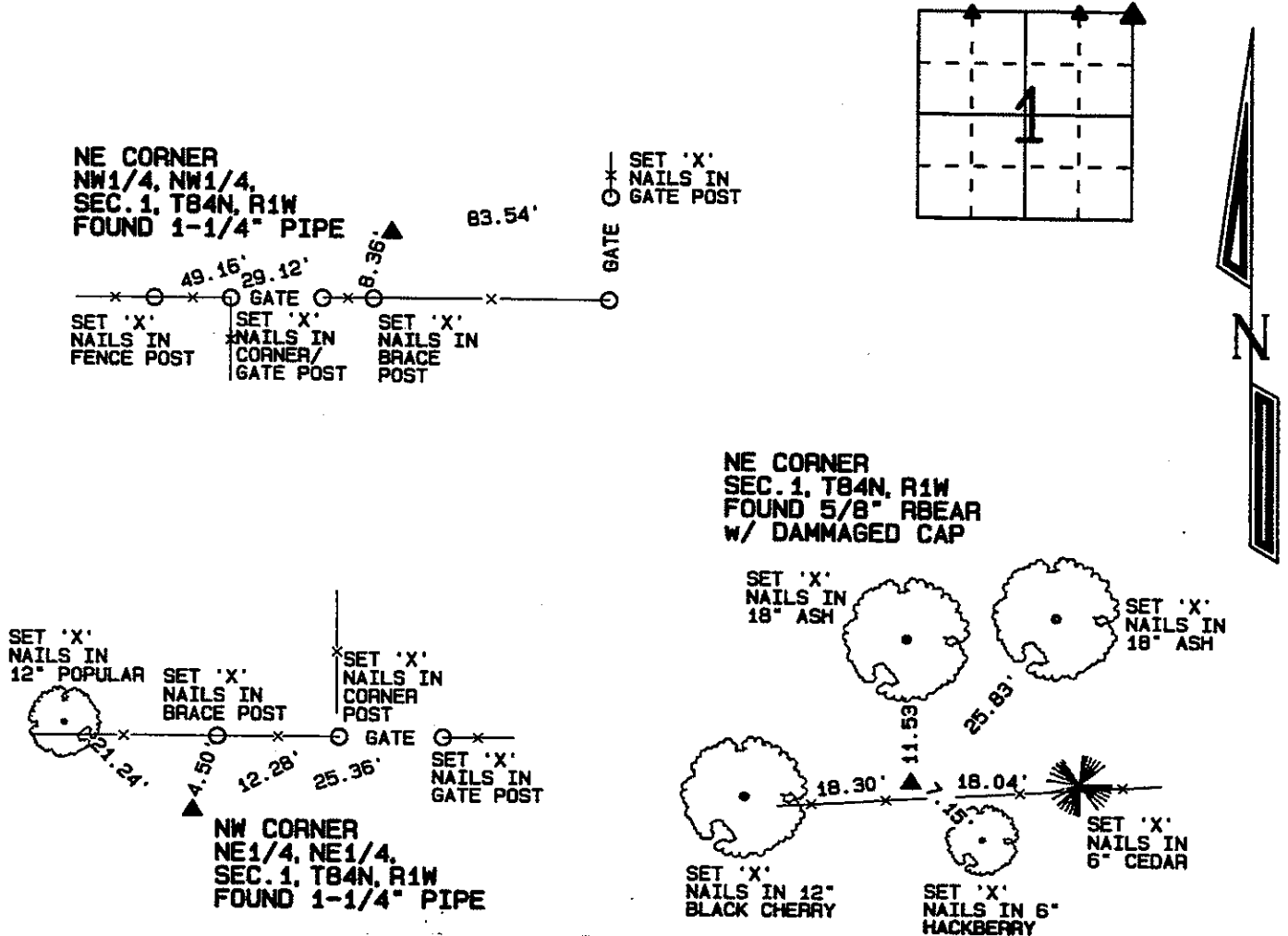
BOOK, PAGE / DIST. NO. / CABINET, SLIDE

(Show reason for preparing this certificate, the evidence and detailed procedures used in establishing the corner positions and monumentation found or placed.)

Monument Description and Remarks: A 1-1/4" PIPE WAS FOUND AT THE NE CORNER OF THE NW1/4 OF THE NW1/4 OF SECTION 1, T84N, R1W AS ILLUSTRATED ON A PLAT OF SURVEY PREPARED BY T.R. WARRINER AND DATED MAY 1915.
 A 1-1/4" PIPE WAS FOUND AT THE NW CORNER OF THE NE1/4 OF THE NE1/4 OF SECTION 1, T84N, R1W AS ILLUSTRATED ON A PLAT OF SURVEY PREPARED BY T.R. WARRINER AND DATED MAY 1915. A 5/8" REBAR WITH A DAMAGED CAP WAS FOUND NEXT TO AN OLD POST AT THE NE CORNER OF SECTION 1, T84N, R1W.

PLAN - VIEW

(Show a minimum of three reference ties to durable physical objects, relevant monuments and physical conditions that will enable recovery of the corner.)

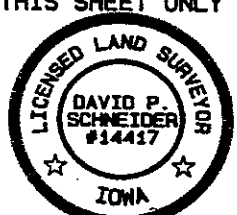


I hereby certify that this land surveying document was prepared and the related survey work was performed by me or under my direct personal supervision and that I am a duly licensed Land Surveyor under the laws of the State of Iowa.

David P. Schneider 7/30/2013
 David P. Schneider P.L.S. #14417 Date:
 My license renewal date is December 31, 2013.

Pages or sheets covered by this seal: THIS SHEET ONLY

SCHNEIDER
 Land Surveying & Planning, Inc.
 P.O. Box 128 Farley, Iowa 52046
 Ph. #563-744-3631 Fax#563-744-3629



List Corners to be Indexed

Corners	Section	Twp	Range
NE CORNER NW1/4, NW1/4	1	84N	1W
NW CORNER NE1/4, NE1/4	1	84N	1W
NE CORNER	1	84N	1W

THIS IS NOT A CERTIFICATION

JONES COUNTY ENGINEER'S OFFICE, 19501 HWY. 64, ANAMOSA, IOWA, 52205 (319)462-3785

UNITED STATES PUBLIC LAND SURVEY CORNER CERTIFICATE

LAND SURVEY MONUMENTS SITUATED IN SECTION 1, TOWNSHIP 84
NORTH, RANGE 1 WEST OF THE 5TH P.M., JONES COUNTY, IOWA

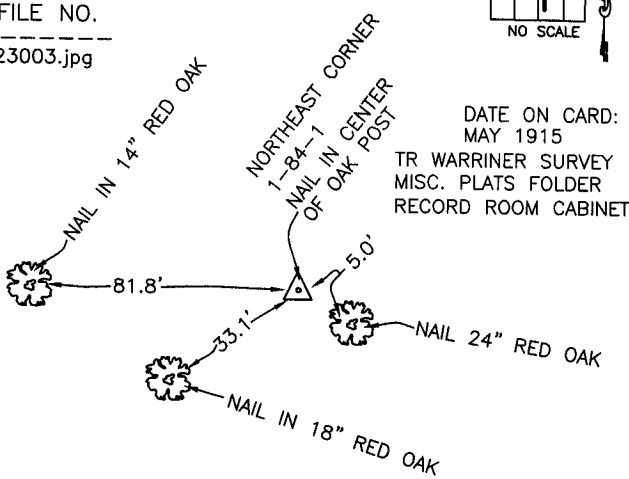
CORNERS TO BE INDEXED

CORNER SECTION TOWNSHIP RANGE
NORTHEAST 1 84N 1W

OFFICE FILE NO.

84101e_123003.jpg

1194



DATE ON CARD:
MAY 1915

TR WARRINER SURVEY
MISC. PLATS FOLDER
RECORD ROOM CABINET

PREVIOUSLY RECORDED IN BOOK _____, PAGE _____
MONUMENT DESCRIPTION AND HOW ESTABLISHED THIS
SKETCH WAS CREATED FROM TIES SHOWN ON THE SMALL INDEX
CARD. REF: TO SHIVE-HATTERY (EXHIBIT 1) NORTHEAST CORNER
SECTION 1, TOWNSHIP 84 NORTH, RANGE 1 WEST OF THE 5TH
PRINCIPAL MERIDIAN, JONES COUNTY, IOWA. NAIL IN CENTER OF OAK
POST.

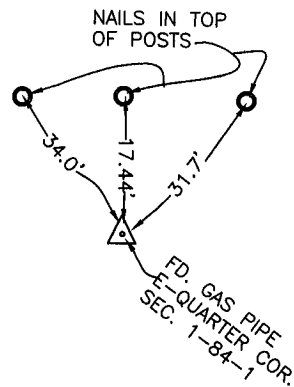
CORNERS TO BE INDEXED

CORNER SECTION TOWNSHIP RANGE
E-QUARTER 1 84N 1W

OFFICE FILE NO.

84101o_123003.jpg

1195



DATE ON CARD:
MAY 1915

TR WARRINER SURVEY
MISC. PLATS FOLDER
RECORD ROOM CABINET

PREVIOUSLY RECORDED IN BOOK _____, PAGE _____
MONUMENT DESCRIPTION AND HOW ESTABLISHED THIS
SKETCH WAS CREATED FROM TIES SHOWN ON THE SMALL INDEX
CARD. REF: TO SHIVE-HATTERY (EXHIBIT 1) EAST-QUARTER CORNER
SECTION 1, TOWNSHIP 84 NORTH, RANGE 1 WEST OF THE 5TH
PRINCIPAL MERIDIAN, JONES COUNTY, IOWA. FOUND GAS PIPE

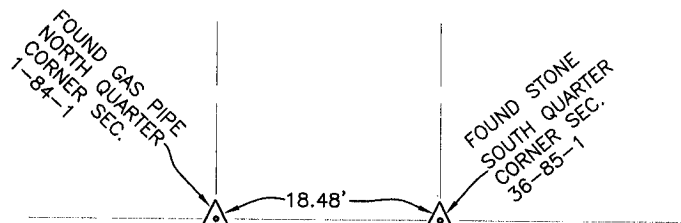
CORNERS TO BE INDEXED

CORNER SECTION TOWNSHIP RANGE
N-QUARTER 1 84N 1W

OFFICE FILE NO.

84101c_123003.jpg

1196



DATE ON CARD:
MAY 1915

TR WARRINER SURVEY
MISC. PLATS FOLDER
RECORD ROOM CABINET

PREVIOUSLY RECORDED IN BOOK _____, PAGE _____
MONUMENT DESCRIPTION AND HOW ESTABLISHED THIS
SKETCH WAS CREATED FROM TIES SHOWN ON THE SMALL INDEX
CARD. REF: TO SHIVE-HATTERY (EXHIBIT 1) N-QUARTER CORNER
SECTION 1, TOWNSHIP 84 NORTH, RANGE 1 WEST OF THE 5TH
PRINCIPAL MERIDIAN, JONES COUNTY, IOWA. (GAS PIPE)

CORNERS TO BE INDEXED

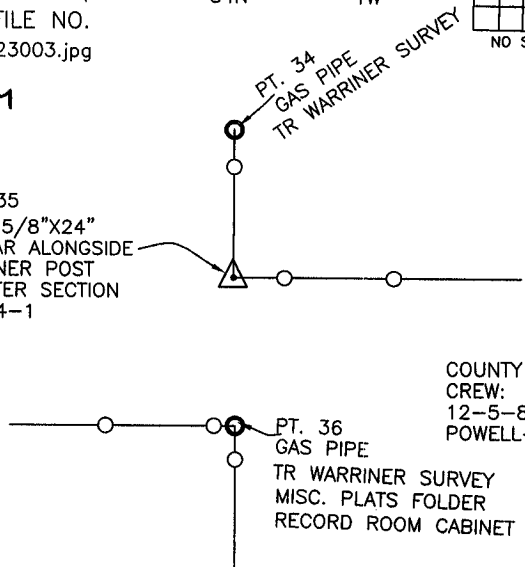
CORNER SECTION TOWNSHIP RANGE
CENTER 1 84N 1W

OFFICE FILE NO.

84101m_123003.jpg

1197

PT. 35
SET 5/8"X24"
REBAR ALONGSIDE
CORNER POST
CENTER SECTION
1-84-1



COUNTY SURVEY
CREW:
12-5-86
POWELL-WOOD

PREVIOUSLY RECORDED IN BOOK _____, PAGE _____
MONUMENT DESCRIPTION AND HOW ESTABLISHED USED POINT
36-34 TO RE-ESTABLISH CENTER OF SECTION 1, TOWNSHIP 84 NORTH,
RANGE 1 WEST OF THE 5TH PRINCIPAL MERIDIAN, JONES COUNTY,
IOWA PER THE T.R. WARRINER SURVEY, DATED MAY 1915, DISTANCES
CHECKED GOOD. PROJ. NO. RS-4785(2)

~~I hereby declare that this plat, survey or report was made by me or under my direct personal supervision and that I am a duly registered Land Surveyor under the laws of the State of Iowa.~~

Signed:

SEAL

JONES COUNTY
ENGINEER'S OFFICE

19501 HWY. 64,
ANAMOSA, IOWA,
52205 (319)462-3785