

2005 1708

FILED  
RECORDERS OFFICE  
JONES COUNTY IOWA

05 MAY 19 PM 12:16

MARIE KRUTZFIELD  
RECORDER 7:00 Pd

PREPARED BY

STEPHEN MICHAEL BRAIN, BRAIN ENGINEERING, INC., 1540 MIDLAND COURT NE, CEDAR RAPIDS, IOWA PH. (319) 294-9424

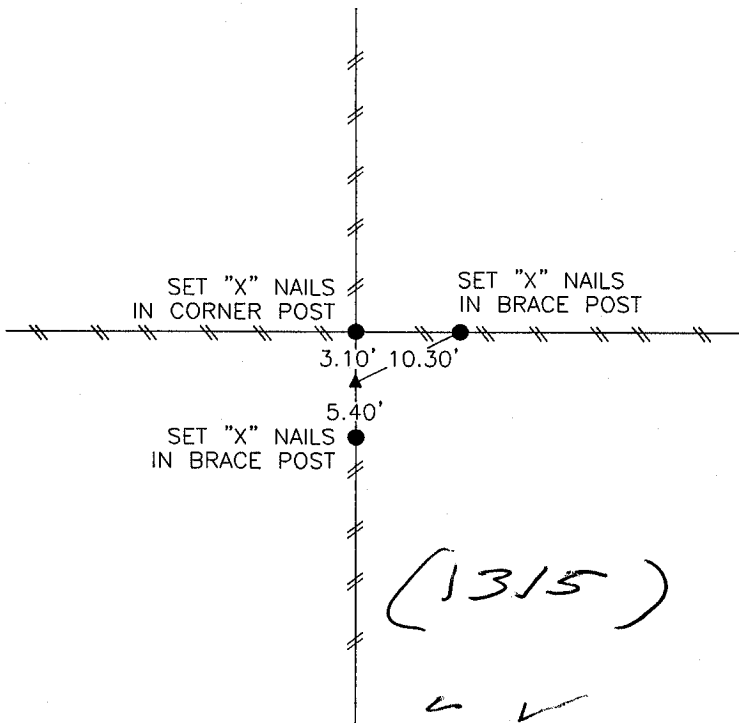
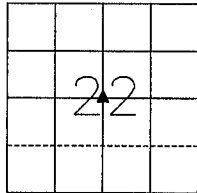
# UNITED STATES PUBLIC LAND SURVEY CORNER CERTIFICATE

LAND SURVEY MONUMENTS SITUATED IN SECTION 22, TOWNSHIP 84 NORTH  
RANGE 1 WEST OF THE 5TH P.M., \_\_\_\_\_ JONES \_\_\_\_\_ COUNTY, IOWA.

NO SCALE



CENTER



84/22 m - 05/805, tie

PREVIOUSLY RECORDED IN BOOK \_\_\_\_\_ PAGE \_\_\_\_\_

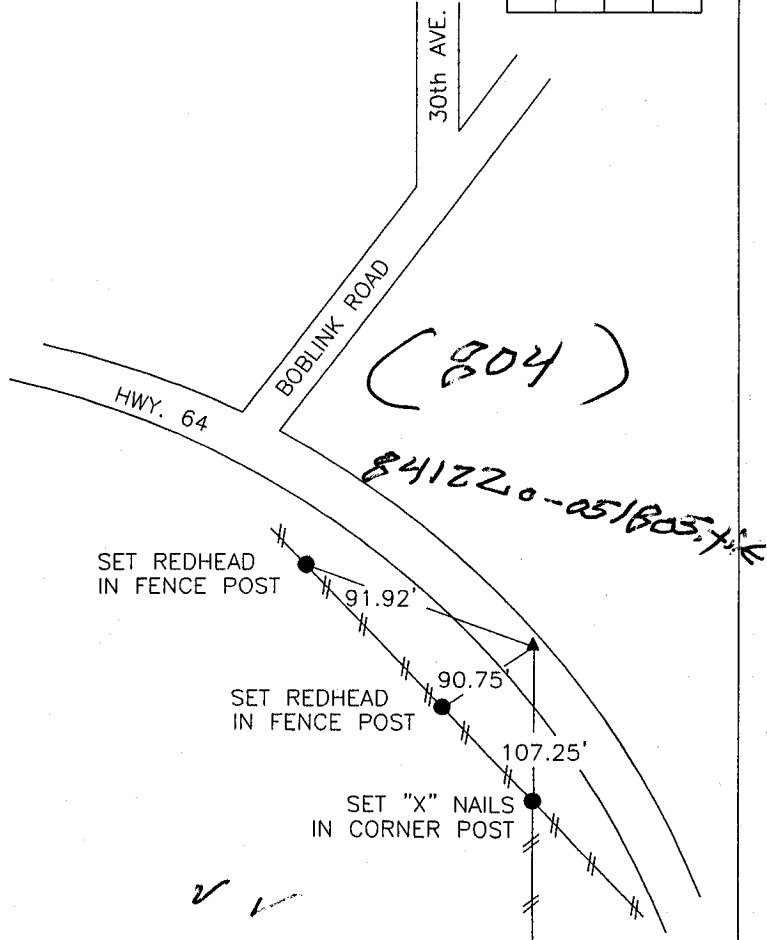
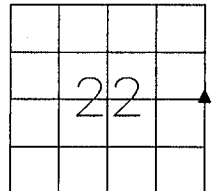
MONUMENT DESCRIPTION AND HOW ESTABLISHED \_\_\_\_\_

FOUND IDOT ALUMINUM MONUMENT WITH MAGNET INSERTS

NO SCALE



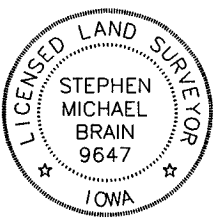
E 1/4 CORNER



PREVIOUSLY RECORDED IN BOOK \_\_\_\_\_ PAGE \_\_\_\_\_

MONUMENT DESCRIPTION AND HOW ESTABLISHED \_\_\_\_\_

FOUND 1/2" REBAR, FLUSH IN PAVEMENT



I hereby certify that this land surveying document and the related survey work was performed by me or under my direct personal supervision and that I am a duly licensed Land Surveyor under the laws of the State of Iowa.

Signed *Stephen Michael Brain* Date 5/18/05

Stephen Michael Brain, L.S.  
My License Renewal Date is December 31, 2006  
License Number 9647  
Pages or sheets covered by this seal: 1/1

- A. THERE IS NO CERTIFICATE FOR THE CORNER ON FILE WITH THE RECORDER OF THE COUNTY IN WHICH THE CORNER IS LOCATED
- B. THE SURVEYOR IN RESPONSIBLE CHARGE OF THE LAND SURVEYING ACCEPTS A CORNER POSITION WHICH DIFFERS FROM THAT SHOWN IN THE PUBLIC RECORDS OF THE COUNTY IN WHICH THE CORNER IS LOCATED.
- C. THE CORNER MONUMENT IS REPLACED OR MODIFIED IN ANY WAY.
- D. THE REFERENCE TIES REFERRED TO IN AN EXISTING PUBLIC RECORD ARE NOT CORRECT.

CORNERS TO BE INDEXED

CORNER	SECTION	TOWNSHIP	RANGE
CENTER	22	T84N	R1 W
E 1/4 CORNER	22	T84N	R1 W

**BRAIN ENGINEERING, INC.**  
1540 MIDLAND COURT NE  
CEDAR RAPIDS, IOWA 52402  
(319) 294-9424

H

336805-10

# THIS IS NOT A CERTIFICATION

JONES COUNTY ENGINEER'S OFFICE, 19501 HWY. 64, ANAMOSA, IOWA, 52205 (319)462-3785

## UNITED STATES PUBLIC LAND SURVEY CORNER CERTIFICATE

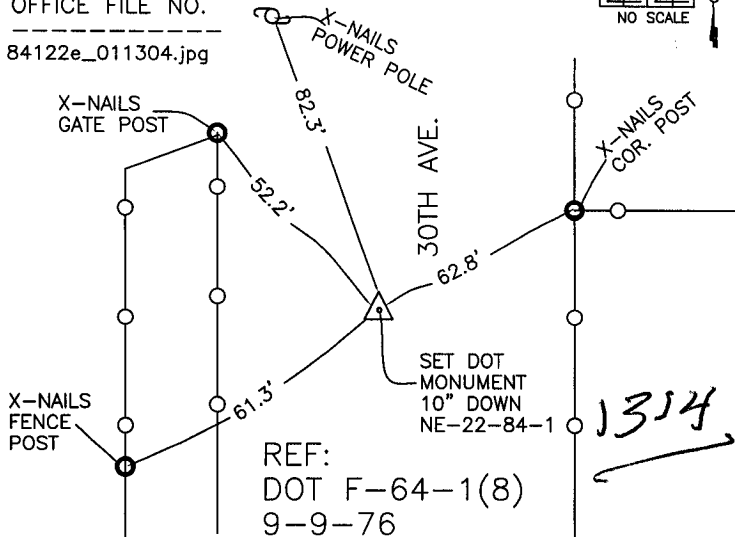
LAND SURVEY MONUMENTS SITUATED IN SECTION 22, TOWNSHIP 84  
NORTH, RANGE 1 WEST OF THE 5TH P.M., JONES COUNTY, IOWA

### CORNERS TO BE INDEXED

CORNER SECTION TOWNSHIP RANGE  
NORTHEAST 22 84N 1W

OFFICE FILE NO.

84122e\_011304.jpg



REF:  
DOT F-64-1(8)  
9-9-76  
FROM INDEX CARD

PREVIOUSLY RECORDED IN BOOK \_\_\_\_\_, PAGE \_\_\_\_\_  
MONUMENT DESCRIPTION AND HOW ESTABLISHED SET

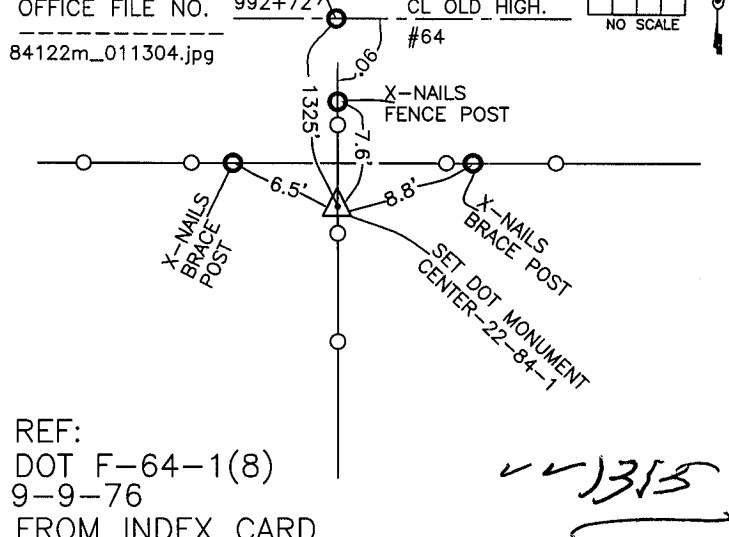
D.O.T. MONUMENT 10" BELOW SURFACE, NORTHEAST CORNER SECTION 22, TOWNSHIP 84 NORTH, RANGE 1 WEST OF THE 5TH PRINCIPAL MERIDIAN, JONES COUNTY, IOWA. REFERENCE TIES AS INDICATED.

### CORNERS TO BE INDEXED

CORNER SECTION TOWNSHIP RANGE  
CENTER 22 84N 1W

OFFICE FILE NO.

84122m\_011304.jpg



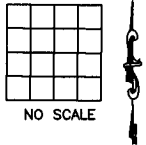
REF:  
DOT F-64-1(8)  
9-9-76  
FROM INDEX CARD

PREVIOUSLY RECORDED IN BOOK \_\_\_\_\_, PAGE \_\_\_\_\_  
MONUMENT DESCRIPTION AND HOW ESTABLISHED SET D.O.T.  
MONUMENT PER 1929 CONSTRUCTION PLANS. SET MONUMENT FLUSH WITH EXISTING SURFACE. CENTER OF SECTION 22, TOWNSHIP 84 NORTH, RANGE 1 WEST OF THE 5TH PRINCIPAL MERIDIAN, JONES COUNTY, IOWA. TIES AS INDICATED.

### CORNERS TO BE INDEXED

CORNER SECTION TOWNSHIP RANGE

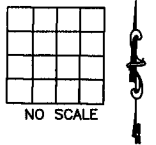
OFFICE FILE NO.



### CORNERS TO BE INDEXED

CORNER SECTION TOWNSHIP RANGE

OFFICE FILE NO.



PREVIOUSLY RECORDED IN BOOK \_\_\_\_\_, PAGE \_\_\_\_\_  
MONUMENT DESCRIPTION AND HOW ESTABLISHED \_\_\_\_\_

PREVIOUSLY RECORDED IN BOOK \_\_\_\_\_, PAGE \_\_\_\_\_  
MONUMENT DESCRIPTION AND HOW ESTABLISHED \_\_\_\_\_

~~I hereby declare that this plat, survey or report was made by me or under my direct personal supervision and that I am a duly registered Land Surveyor under the laws of the State of Iowa.~~

Signed:

SEAL

JONES COUNTY  
ENGINEER'S OFFICE

19501 HWY. 64,  
ANAMOSA, IOWA,  
52205 (319)462-3785