

RECEIVED

JUL 10 2009

JONES COUNTY ENGINEER

PREPARED BY
STEPHEN MICHAEL BRAIN, BRAIN ENGINEERING, INC., 1540 MIDLAND COURT NE, CEDAR RAPIDS, IOWA PH. (319) 294-9424

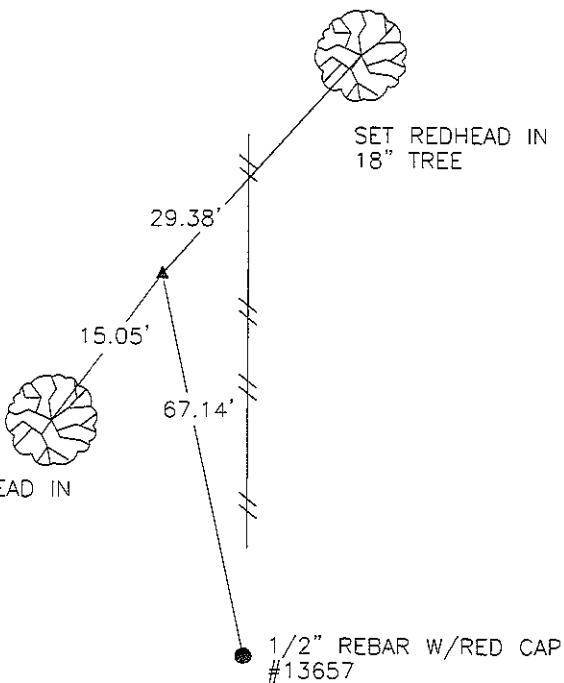
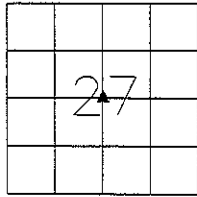
UNITED STATES PUBLIC LAND SURVEY CORNER CERTIFICATE

LAND SURVEY MONUMENTS SITUATED IN SECTION 27, TOWNSHIP 84 NORTH
RANGE 1 WEST OF THE 5TH P.M., _____ JONES _____ COUNTY, IOWA.

NO SCALE



CENTER

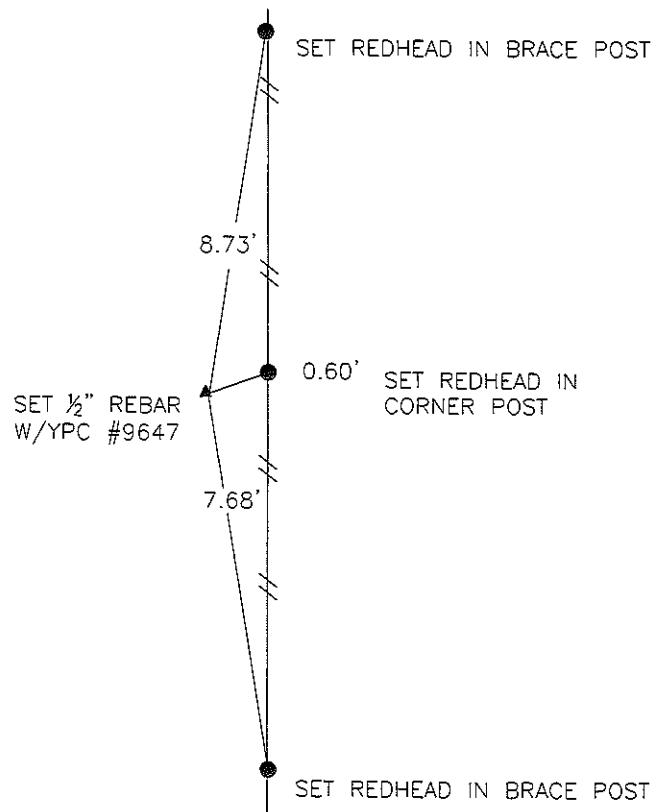
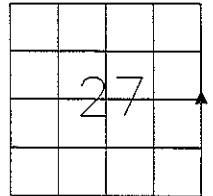


PREVIOUSLY RECORDED IN FEEBOOK 2007 2887
MONUMENT DESCRIPTION AND HOW ESTABLISHED _____
SET 1/2" REBAR W/YELLOW PLASTIC CAP #9647 AT
INTERSECTION OF 1/4 CORNERS OF SECTION 27

NO SCALE



E 1/4 CORNER



PREVIOUSLY RECORDED IN BOOK _____ PAGE _____
MONUMENT DESCRIPTION AND HOW ESTABLISHED _____
SET 1/2" REBAR W/YELLOW PLASTIC CAP #9647 AT
FENCE CORNER, BEST EVIDENCE AVAILABLE



I hereby certify that this land surveying document and the related survey work was performed by me or under my direct personal supervision and that I am a duly licensed Land Surveyor under the laws of the State of Iowa.
Signed *Stephen Michael Brain* Date 7/8/09
Stephen Michael Brain, L.S.
My License Renewal Date is December 31, 2010
License Number 9647
Pages or sheets covered by this seal: 1/1

- A. THERE IS NO CERTIFICATE FOR THE CORNER ON FILE WITH THE RECORDER OF THE COUNTY IN WHICH THE CORNER IS LOCATED
- B. THE SURVEYOR IN RESPONSIBLE CHARGE OF THE LAND SURVEYING ACCEPTS A CORNER POSITION WHICH DIFFERS FROM THAT SHOWN IN THE PUBLIC RECORDS OF THE COUNTY IN WHICH THE CORNER IS LOCATED.
- C. THE CORNER MONUMENT IS REPLACED OR MODIFIED IN ANY WAY.
- D. THE REFERENCE TIES REFERRED TO IN AN EXISTING PUBLIC RECORD ARE NOT CORRECT.

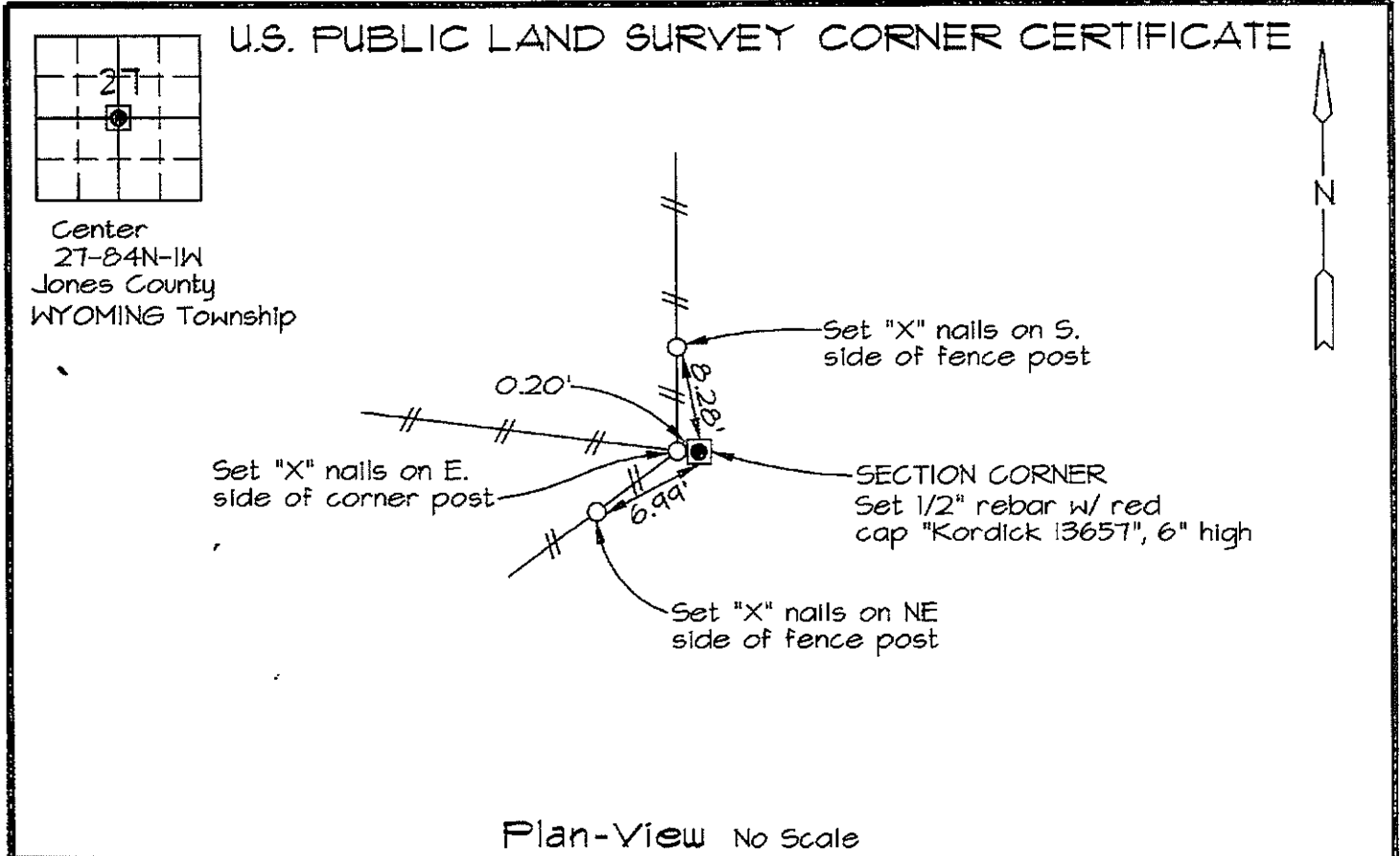
CORNERS TO BE INDEXED			
CORNER	SECTION	TOWNSHIP	RANGE
CENTER	27	T84N	R1W
E 1/4 CORNER	27	T84N	R1W

BRAIN ENGINEERING, INC.

1540 MIDLAND COURT NE
CEDAR RAPIDS, IOWA 52402 407409-10
(319) 294-9424

Marie Krutzfield, Recorder
 Jones County, Iowa

Prepared by: Richard M. Kordick, P.E.L.S., 120 East Main, Suite D, Anamosa, IA 52205 Phone: (319) 462-4498




Reason for corner tie:
 A) There is no certificate for the corner on file with the recorder.
 B) Corner position differs from previously recorded certificate recorded in book , page
 C) Corner monument was replaced or modified.
 D) Reference ties in previously recorded certificate recorded in book , page are incorrect or missing.

Research at the recorder's office, auditor's office, and engineer's office revealed the following:
 None.

Field search performed was as follows:
 Field search was performed with a metal detector, excavation and probing. Nothing was found.

Monument found or set:
 The corner was determined to be obliterated. A 1/2" rebar with red cap "Kordick 13657" was set at the existing fence corner which perpetuated the corner location and used as the corner.

	<p>I hereby certify that this land surveying document was prepared and the related survey work was performed by me or under my direct personal supervision and that I am a duly licensed Land Surveyor under the laws of the State of Iowa.</p> <p style="text-align: right;"><i>Richard M. Kordick</i> 9/7/2007 Richard M. Kordick date License number 13657 My license renewal date is December 31, 2007. Pages or sheets covered by this seal: 1 of 1</p>	<p>LEGEND:</p> <ul style="list-style-type: none"> Section Corner as noted Power Pole Section line Centerline Existing Fence Recorded Dist.
--	--	---

Kordick Surveying & Engineering 120 East Main, Suite D Anamosa, Iowa 52205 (319) 462-4498	U.S. Public Land Survey Corner Certificate	Field BK 01021 Date 9-7-07
	Project: Plat of Survey Parcel No. 2007-91 Recorder's Pl. Bk 6 - Pg. 103	Job No. 01021 Sheet 1 of 1