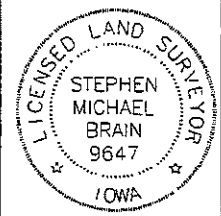
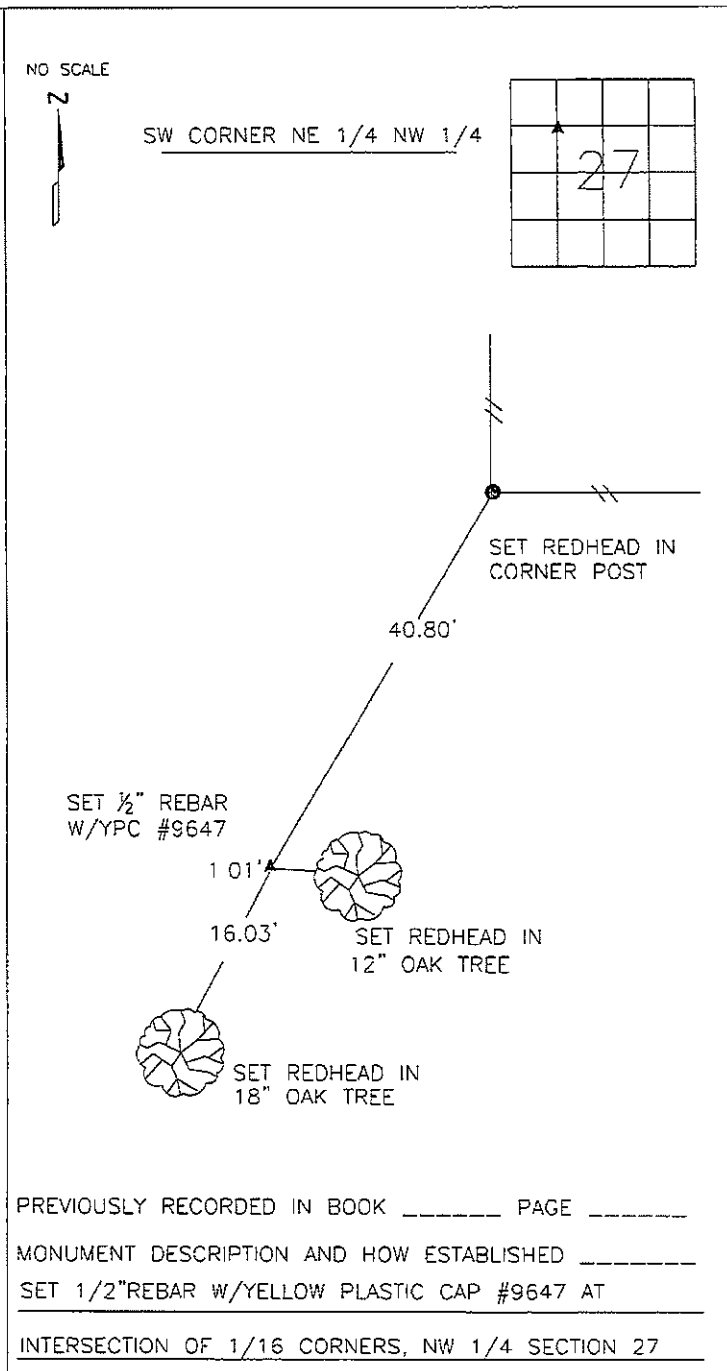
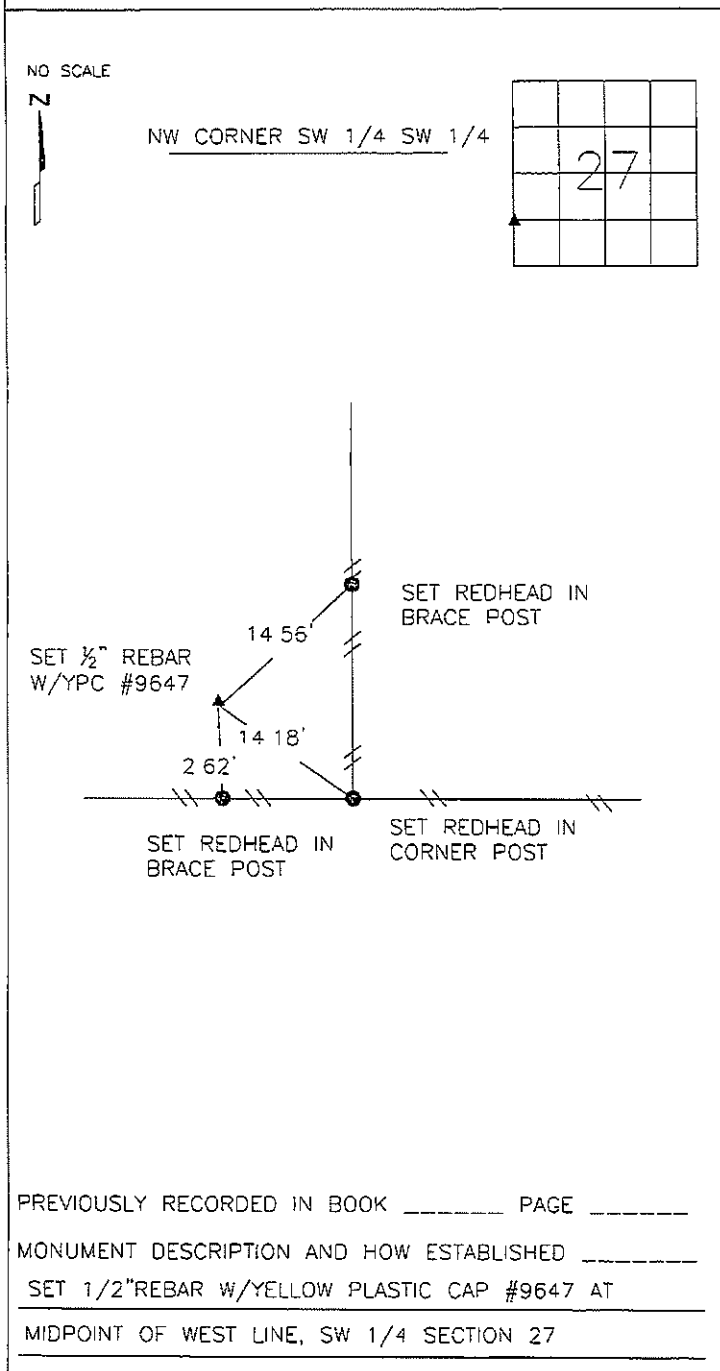


FEE BOOK: 2009 2453 7/10/2009 1:45 PM  
 REC FEES: \$9.00  
 PAGES: 1 Marie Krutzfield, Recorder  
 Jones County, Iowa

PREPARED BY  
 STEPHEN MICHAEL BRAIN, BRAIN ENGINEERING, INC., 1540 MIDLAND COURT NE, CEDAR RAPIDS, IOWA PH. (319) 294-9424

# UNITED STATES PUBLIC LAND SURVEY CORNER CERTIFICATE

LAND SURVEY MONUMENTS SITUATED IN SECTION 27, TOWNSHIP 84 NORTH  
 RANGE 1 WEST OF THE 5TH P.M., JONES COUNTY, IOWA.



I hereby certify that this land surveying document and the related survey work was performed by me or under my direct personal supervision and that I am a duly licensed Land Surveyor under the laws of the State of Iowa

Signed *Stephen Michael Brain* Date 7/8/09

Stephen Michael Brain, L.S.  
 My License Renewal Date is December 31, 2010  
 License Number 9647  
 Pages or sheets covered by this seal 1/1

- A. THERE IS NO CERTIFICATE FOR THE CORNER ON FILE WITH THE RECORDER OF THE COUNTY IN WHICH THE CORNER IS LOCATED
- B. THE SURVEYOR IN RESPONSIBLE CHARGE OF THE LAND SURVEYING ACCEPTS A CORNER POSITION WHICH DIFFERS FROM THAT SHOWN IN THE PUBLIC RECORDS OF THE COUNTY IN WHICH THE CORNER IS LOCATED.
- C. THE CORNER MONUMENT IS REPLACED OR MODIFIED IN ANY WAY.
- D. THE REFERENCE TIES REFERRED TO IN AN EXISTING PUBLIC RECORD ARE NOT CORRECT. MAB 7/8/09

| CORNERS TO BE INDEXED |         |          |       |
|-----------------------|---------|----------|-------|
| CORNER                | SECTION | TOWNSHIP | RANGE |
| NW CORNER             | 27      | T84N     | R1W   |
| SW 1/4 SW 1/4         |         |          |       |
| SW CORNER             | 27      | T84N     | R1W   |
| NE 1/4 NW 1/4         |         |          |       |

**BRAIN ENGINEERING, INC.**  
 1540 MIDLAND COURT NE  
 CEDAR RAPIDS, IOWA 52402 407409-10  
 (319) 294-9424