

Marie Krutzfield, Recorder
 Jones County, Iowa

Prepared by Wm. Burger Land Surveyors 510 3rd Street West Court, Worthington, Iowa Phone 563 - 855 2028

UNITED STATES PUBLIC LAND SURVEY CORNER CERTIFICATE

Land Survey Monuments situated In Section 29, Township 84N, Range 1W, of the Fifth Principal Meridian, Jones County, Iowa. Previously recorded In N/A in the Office of the County Recorder

Monument Description and Remarks: No Corner Certificates Found at the County Recorders Office

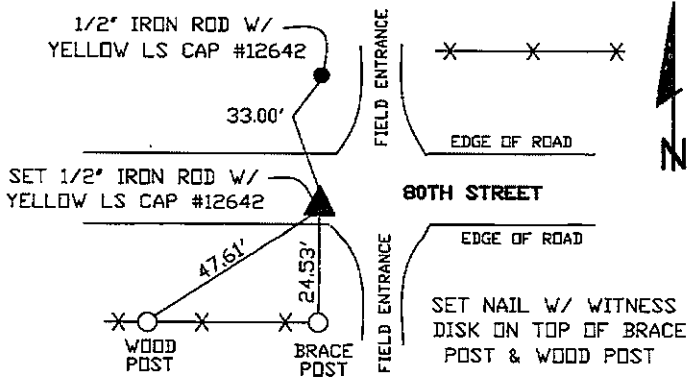
SE CORNER SW1/4 SW1/4 - SET 1/2" IRON ROD WITH YELLOW LS CAP #12642 - SET ON LINE AND MIDWAY BETWEEN THE SW1/4 CORNER AND THE SW CORNER

NW CORNER SW1/4 SW1/4 - SET PK NAIL WITH WASHER - SET ON LINE AND MIDWAY BETWEEN THE SW CORNER AND THE W1/4 CORNER

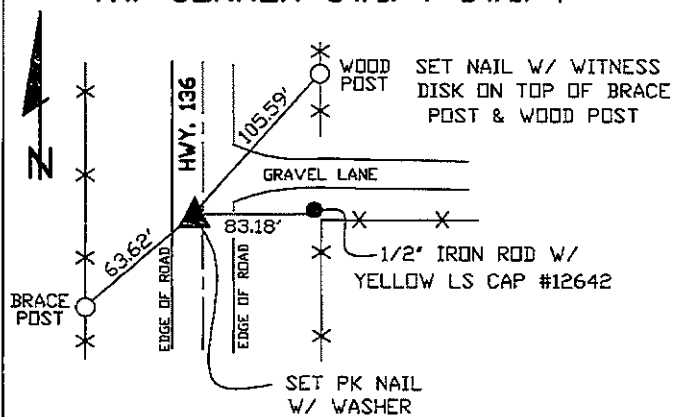
NE CORNER SW1/4 SW1/4 - SET 1/2" IRON ROD W YELLOW LS CAP #12642 (BURIED 12" DEEP) - RUN STRAIGHT LINES FROM OPPOSITE 1/4 1/4 CORNERS AND SET AT THE POINT OF INTERSECTION

PLAN VIEW

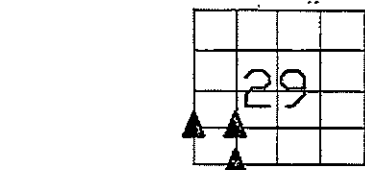
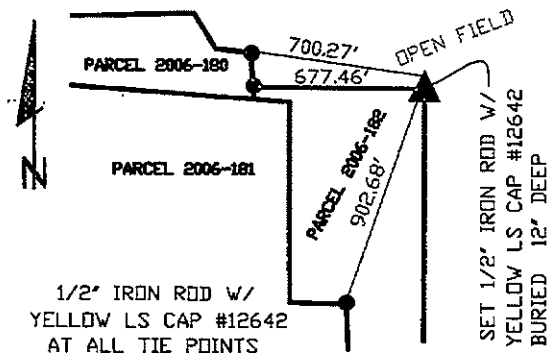
SE CORNER SW1/4 SW1/4



NW CORNER SW1/4 SW1/4



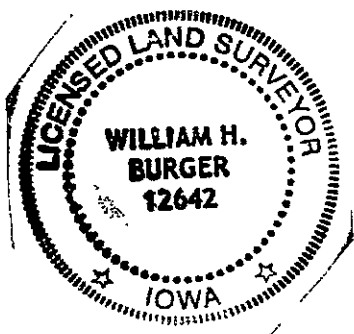
NE CORNER SW1/4 SW1/4



SEC. 29 TWP. 84N RANGE 1W

CORNERS TO BE INDEXED

SE CORNER SW1/4 SW1/4	29	84N	1W
NW CORNER SW1/4 SW1/4	29	84N	1W
NE CORNER SW1/4 SW1/4	29	84N	1W



I hereby certify that this land surveying document was prepared and related survey work was performed by me or under my direct personal supervision and that I am a duly licensed Land Surveyor under the laws of the State of Iowa.

William H. Burger 12/21/06
 William H. Burger Date

License number 12642

My license renewal date is December 31, 2006

Pages or Sheets covered by this seal Sheet 1 of 1