

Marie Krutzfield, Recorder
 Jones County, Iowa

Prepared by Wm. Burger Land Surveyors 510 3rd Street West Court, Worthington, Iowa Phone 563 - 855 2028

UNITED STATES PUBLIC LAND SURVEY CORNER CERTIFICATE

Land Survey Monuments situated In Section 29, Township 84N, Range 1W, of the Fifth Principal Meridian, Jones County, Iowa. Previously recorded In N/A In the Office of the County Recorder

Monument Description and Remarks: No Corner Certificates Found at the County Recorders Office

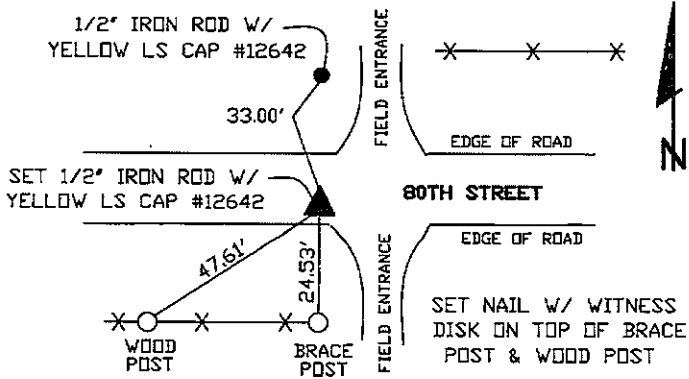
SE CORNER SW1/4 SW1/4 - SET 1/2" IRON ROD WITH YELLOW LS CAP #12642 - SET ON LINE AND MIDWAY BETWEEN THE SW1/4 CORNER AND THE SW CORNER

NW CORNER SW1/4 SW1/4 - SET PK NAIL WITH WASHER - SET ON LINE AND MIDWAY BETWEEN THE SW CORNER AND THE W1/4 CORNER

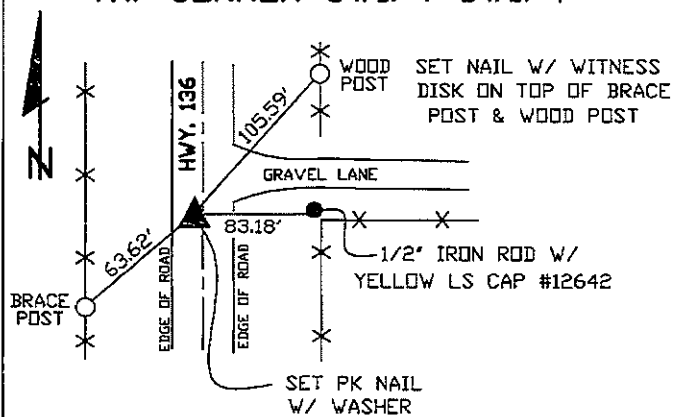
NE CORNER SW1/4 SW1/4 - SET 1/2" IRON ROD W YELLOW LS CAP #12642 (BURIED 12" DEEP) - RUN STRAIGHT LINES FROM OPPOSITE 1/4 1/4 CORNERS AND SET AT THE POINT OF INTERSECTION

PLAN VIEW

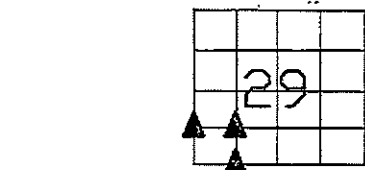
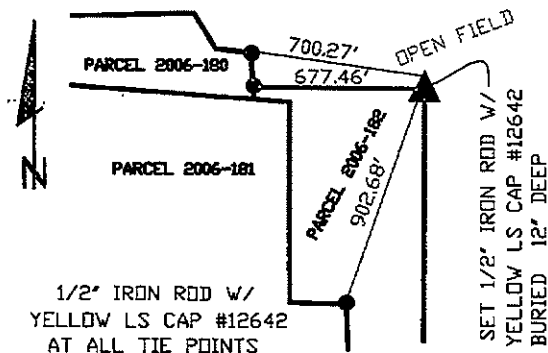
SE CORNER SW1/4 SW1/4



NW CORNER SW1/4 SW1/4



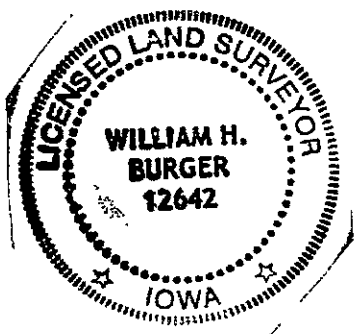
NE CORNER SW1/4 SW1/4



SEC. 29 TWP. 84N RANGE 1W

CORNERS TO BE INDEXED

SE CORNER SW1/4 SW1/4	29	84N	1W
NW CORNER SW1/4 SW1/4	29	84N	1W
NE CORNER SW1/4 SW1/4	29	84N	1W



I hereby certify that this land surveying document was prepared and related survey work was performed by me or under my direct personal supervision and that I am a duly licensed Land Surveyor under the laws of the State of Iowa.

William H. Burger 12/21/06
 William H. Burger Date

License number 12642

My license renewal date is December 31, 2006

Pages or Sheets covered by this seal Sheet 1 of 1

THIS IS NOT A CERTIFICATION

JONES COUNTY ENGINEER'S OFFICE, 19501 HWY. 64, ANAMOSA, IOWA, 52205 (319)462-3785

UNITED STATES PUBLIC LAND SURVEY CORNER CERTIFICATE

LAND SURVEY MONUMENTS SITUATED IN SECTION 32, TOWNSHIP 84
NORTH, RANGE 1 WEST OF THE 5TH P.M., JONES COUNTY, IOWA

CORNERS TO BE INDEXED

CORNER NE-NW-NW	SECTION 32	TOWNSHIP 84N	RANGE 1W
--------------------	---------------	-----------------	-------------

OFFICE FILE NO. _____
84132b_020204.jpg

1328

PREVIOUSLY RECORDED IN BOOK _____, PAGE _____
MONUMENT DESCRIPTION AND HOW ESTABLISHED FOUND _____
GRANITE STONE. SET TIES AS INDICATED. NORTHEAST CORNER,
NORTHWEST QUARTER, NORTHWEST QUARTER OF SECTION 32,
TOWNSHIP 84 NORTH, RANGE 1 WEST OF THE 5TH PRINCIPAL
MERIDIAN, JONES COUNTY, IOWA.

CORNERS TO BE INDEXED

CORNER NW-NE-NE	SECTION 32	TOWNSHIP 84N	RANGE 1W
--------------------	---------------	-----------------	-------------

OFFICE FILE NO. _____
84132d_020204.jpg

1329

PREVIOUSLY RECORDED IN BOOK _____, PAGE _____
MONUMENT DESCRIPTION AND HOW ESTABLISHED FOUND _____
GRANITE STONE. SET REFERENCE POINTS AS INDICATED. NORTHWEST
CORNER OF THE NORTHEAST QUARTER OF THE NORTHEAST QUARTER
OF SECTION 32, TOWNSHIP 84 NORTH, RANGE 1 WEST OF THE 5TH
PRINCIPAL MERIDIAN, JONES COUNTY, IOWA.

CORNERS TO BE INDEXED

CORNER	SECTION	TOWNSHIP	RANGE
--------	---------	----------	-------

OFFICE FILE NO. _____

PREVIOUSLY RECORDED IN BOOK _____, PAGE _____
MONUMENT DESCRIPTION AND HOW ESTABLISHED _____

CORNERS TO BE INDEXED

CORNER	SECTION	TOWNSHIP	RANGE
--------	---------	----------	-------

OFFICE FILE NO. _____

PREVIOUSLY RECORDED IN BOOK _____, PAGE _____
MONUMENT DESCRIPTION AND HOW ESTABLISHED _____

~~I hereby declare that this plat, survey or report was made by me or under my direct personal supervision and that I am a duly registered Land Surveyor under the laws of the State of Iowa.~~

Signed: _____

SEAL

JONES COUNTY
ENGINEER'S OFFICE

19501 HWY. 64,
ANAMOSA, IOWA,
52205 (319)462-3785