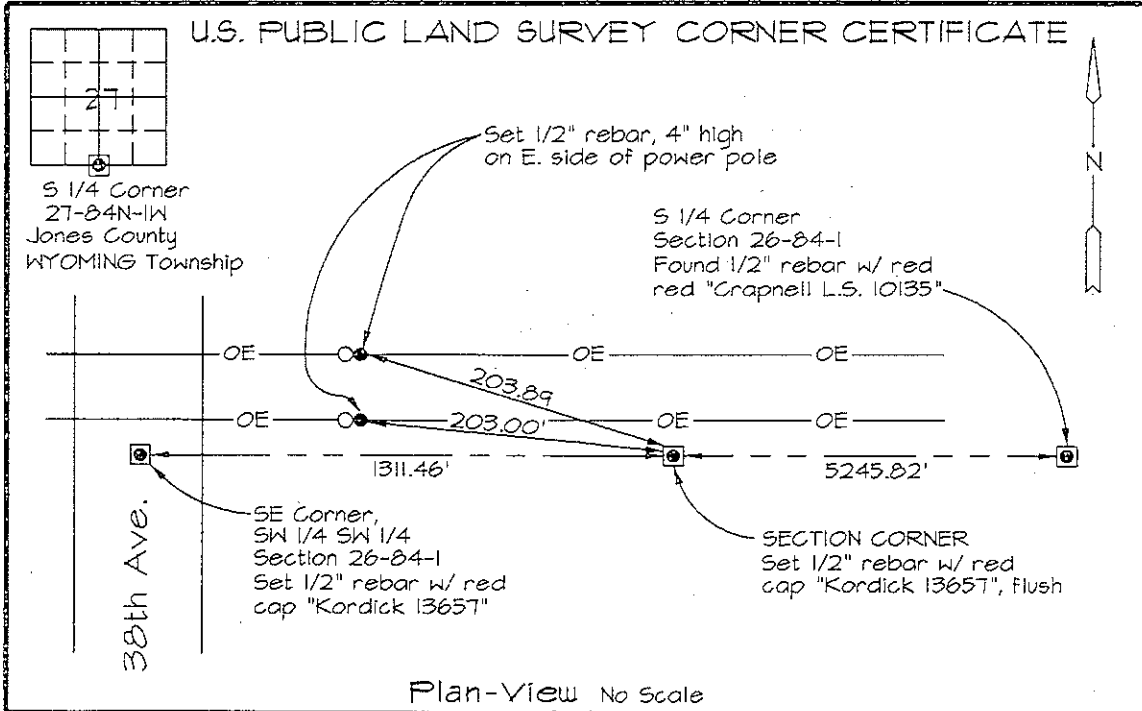


Marie Krutzfield, Recorder  
 Jones County, Iowa

Prepared by: Richard M. Kordick, P.E., L.S., 120 East Main, Suite D, Anamosa, IA 52205 Phone: (319) 462-4498



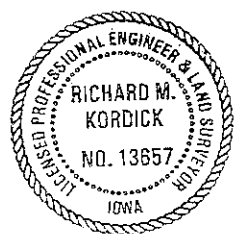
Reason for corner tie:  
 A) There is no certificate for the corner on file with the recorder.  
 B) Corner position differs from previously recorded certificate recorded in book , page  
 C) Corner monument was replaced or modified.  
 D) Reference ties in previously recorded certificate recorded in book , page are incorrect or missing.

Research at the recorder's office, auditor's office, and engineer's office revealed the following:  
 None.

Field search performed was as follows:  
 Field search was performed with a metal detector, excavation and probing. Nothing was found.

Monument found or set:  
 The corner was determined to be lost. A 1/2" rebar with red cap "Kordick 13657" was set and used as the corner.

I hereby certify that this land surveying document was prepared and the related survey work was performed by me or under my direct personal supervision and that I am a duly licensed Land Surveyor under the laws of the State of Iowa.  
*Richard M. Kordick* 9/7/2007 / date  
 Richard M. Kordick  
 License number 13657  
 My license renewal date is December 31, 2007.  
 Pages or sheets covered by this seal: 1 of 1



LEGEND:  
 Section Corner as noted  
 ⓧ Power Pole  
 - - - - Section line  
 - - - - Centerline  
 # # # Existing Fence  
 ( ) Recorded Dist.

Kordick Surveying & Engineering 120 East Main, Suite D Anamosa, Iowa 52205 (319) 462-4498	U.S. Public Land Survey Corner Certificate		Field BK 07027
	Project: Plat of Survey Parcel No. 2007-91 Recorder's Pl. Bk 5 - Pg. 103		Date 9-7-07
			Job No. 07027
			Sheet 1 of 1