

Jones County Marie Krutzfield Recorder  
 Fee Book 2013 0293  
 01/23/2013 @1015AM # Pages 1  
 ZSC SEC COR CERT  
 Total Fees: \$7.00

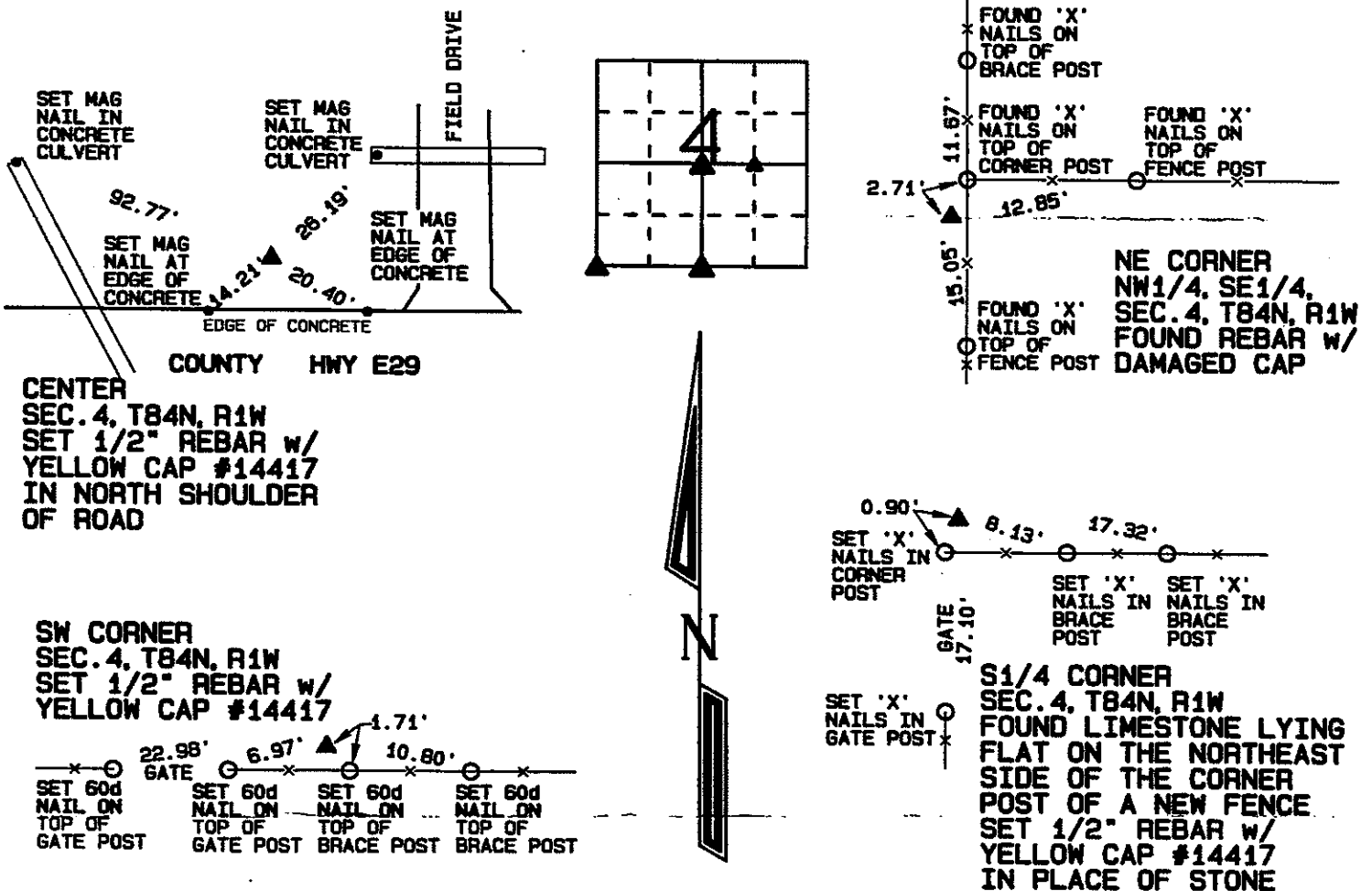
Prepared by: SCHNEIDER Land Surveying and Planning, Inc. P.O. Box 128 Farley, Iowa 52046 563-744-3631

**UNITED STATES PUBLIC LAND SURVEY CORNER CERTIFICATE OF**

Land Survey Monuments situated in Section 4, Township 84 North, Range 1 West of the Fifth Principal Meridian, Jones County, Iowa.  
 Previously recorded (NONE OF RECORD)

Monument Description and Remarks: THE CENTER OF SECTION 4, T84N, R1W WAS ESTABLISHED ON A LINE FROM THE W1/4 CORNER TO THE E1/4 CORNER OF SAID SECTION 4 AND BY DOUBLING THE DISTANCE FROM THE W1/4 CORNER TO THE FORTY CORNER A QUARTER MILE WEST OF THE CENTER. A 1/2" REBAR W/ DAMAGED CAP WAS FOUND AT THE NE CORNER OF THE NW1/4 OF THE SE1/4 OF SECTION 4, T84N, R1W. THE SW CORNER OF SECTION 4, T84N, R1W WAS ESTABLISHED IN THE EAST-WEST OCCUPATION FENCE AND BY DOUBLING THE DISTANCE FROM THE S1/4 CORNER THROUGH THE CENTER OF THE COUNTY ROAD. THE POSITION IS 1320' EAST OF THE FENCE LINE INTERSECTION WEST OF THE SW CORNER OF SECTION 4. FOUND LIMESTONE ON THE NE SIDE OF CORNER POST AT THE S1/4 CORNER OF SECTION 4, T84N, R1W AS ILLUSTRATED IN COUNTY ENGINEER'S RECORDS. SET A 1/2" REBAR W/ CAP AT THE LOCATION OF THE STONE AND USED AS THE CORNER.

**PLAN - VIEW**



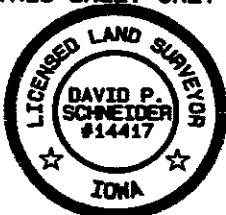
I hereby certify that this land surveying document was prepared and the related survey work was performed by me or under my direct personal supervision and that I am a duly licensed Land Surveyor under the laws of the State of Iowa.

*David P. Schneider* 1/22/2013  
 David P. Schneider P.L.S. #14417 Date:  
 My license renewal date is December 31, 2013.

Pages or sheets covered by this seal: THIS SHEET ONLY

**SCHNEIDER**  
 Land Surveying & Planning, Inc.

P.O. Box 128 Farley, Iowa 52046  
 Ph. #563-744-3631 Fax#563-744-3629



List Corners to be Indexed

Corners	Section	Twp	Range
CENTER	4	84N	1W
NE CORNER NW1/4, SE1/4	4	84N	1W
SW CORNER	4	84N	1W
S1/4 CORNER	4	84N	1W