

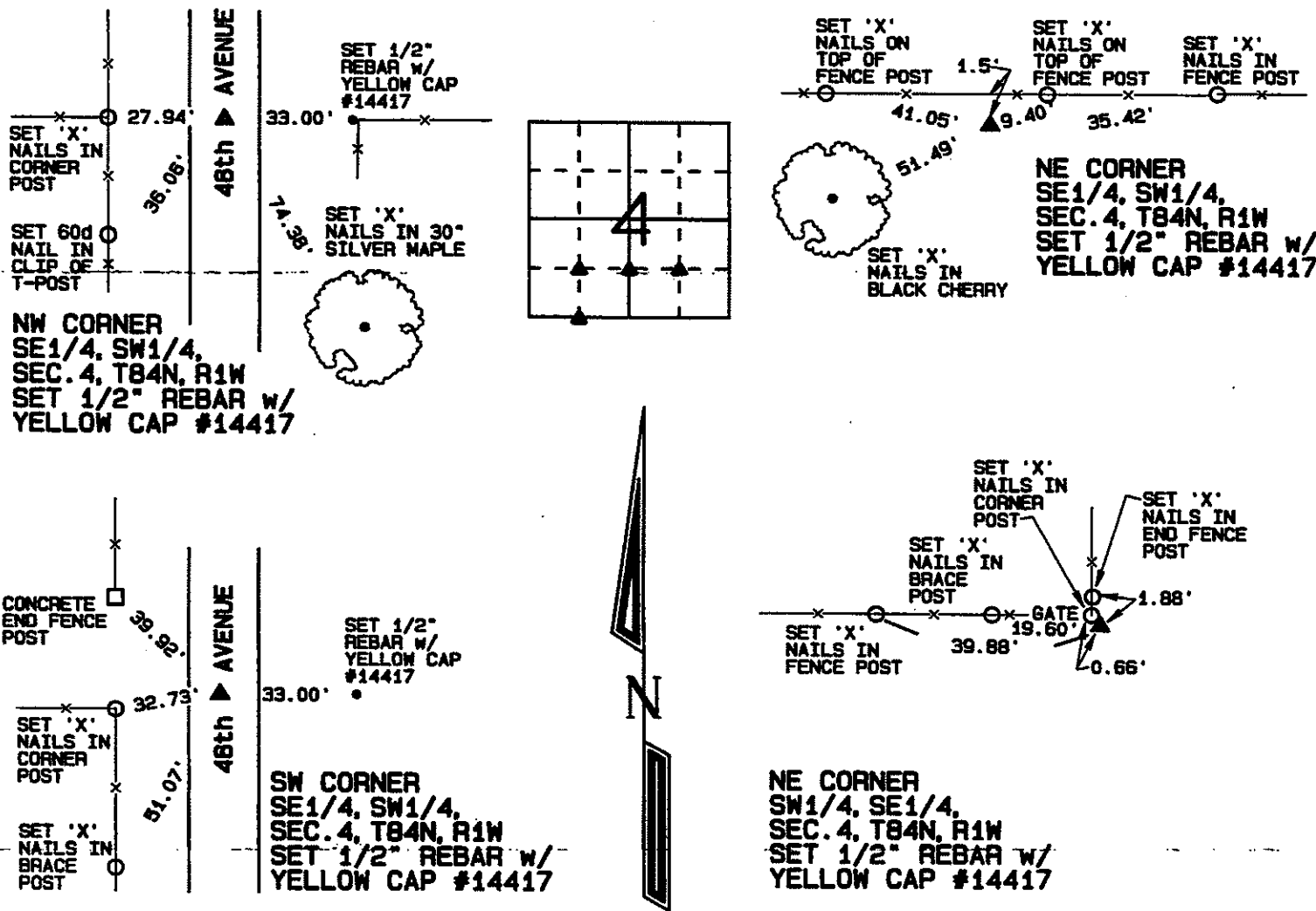
Prepared by: SCHNEIDER Land Surveying and Planning, Inc. P.O. Box 128 Farley, Iowa 52046 563-744-3631

UNITED STATES PUBLIC LAND SURVEY CORNER CERTIFICATE OF

Land Survey Monuments situated in Section 4, Township 84 North, Range 1 West of the Fifth Principal Meridian, Jones County, Iowa.
 Previously recorded (NONE OF RECORD)

Monument Description and Remarks: THE NW CORNER OF THE SE1/4 OF THE SW1/4 OF SECTION 4, T84N, R1W WAS ESTABLISHED AT THE THEORETICAL CENTER OF THE SW1/4 OF SAID SECTION 4. THE NE CORNER OF THE SE1/4 OF THE SW1/4 OF SECTION 4, T84N, R1W WAS ESTABLISHED AT THE MIDPOINT OF A LINE FROM THE S1/4 CORNER TO THE CENTER OF SAID SECTION 4. THE SW CORNER OF THE SE1/4 OF THE SW1/4 OF SECTION 4, T84N, R1W WAS ESTABLISHED AT THE MIDPOINT OF A LINE FROM THE SW CORNER TO THE S1/4 CORNER OF SAID SECTION 4. THE NE CORNER OF THE SW1/4 OF THE SE1/4 OF SECTION 4, T84N, R1W WAS ESTABLISHED AS FENCED AND OCCUPIED.

PLAN - VIEW

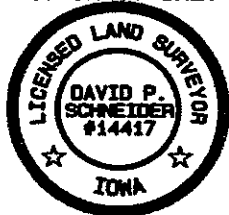


I hereby certify that this land surveying document was prepared and the related survey work was performed by me or under my direct personal supervision and that I am a duly licensed Land Surveyor under the laws of the State of Iowa.

David P. Schneider
 David P. Schneider P.L.S. #14417 Date: 1/23/2013
 My license renewal date is December 31, 2013.

Pages or sheets covered by this seal: THIS SHEET ONLY

SCHNEIDER
 Land Surveying & Planning, Inc.
 P.O. Box 128 Farley, Iowa 52046
 Ph. #563-744-3631 Fax #563-744-3629



List Corners to be Indexed			
Corners	Section	Twp	Range
NW CORNER SE1/4, SW1/4	4	84N	1W
NE CORNER SE1/4, SW1/4	4	84N	1W
SW CORNER SE1/4, SW1/4	4	84N	1W
NE CORNER SW1/4, SE1/4	4	84N	1W