

COPY

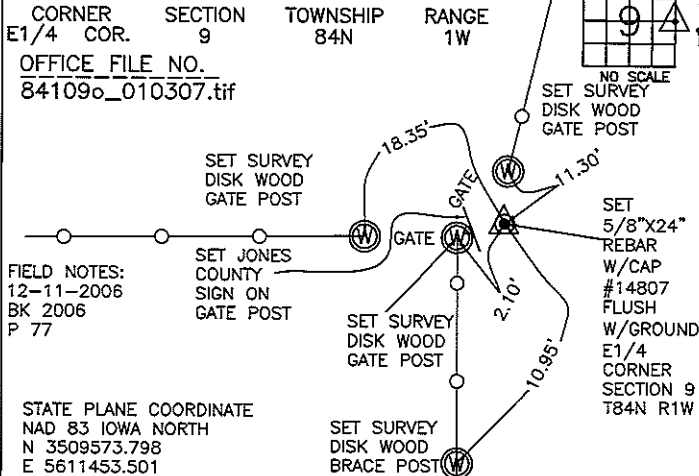
FEEBOOK: 2007 0086
REC FEES: NO FEE
PAGES: 1 1/9/2007 10:08 AM
Marie Krutzfield, Recorder
Jones County, Iowa

J.D. TJEPKES, LS. JONES COUNTY ENGINEER'S OFFICE, 19501 HWY. 64, ANAMOSA, IOWA, 52205 (319)462-3785

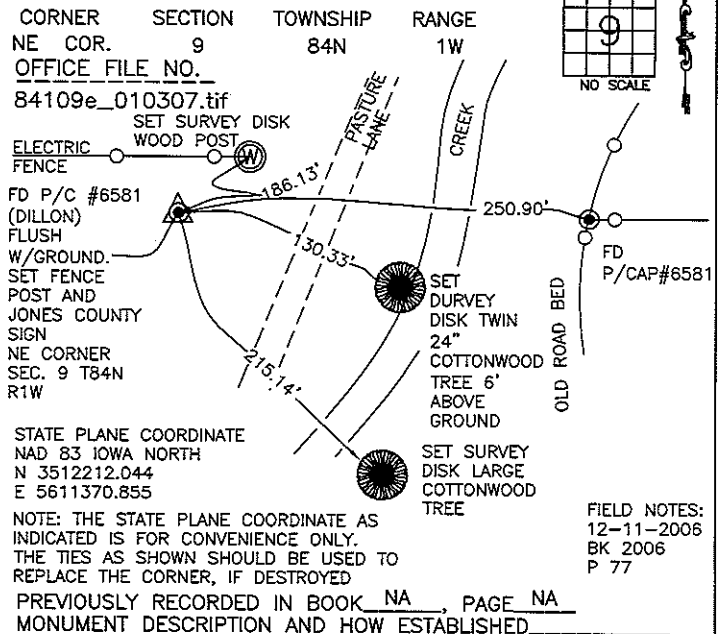
UNITED STATES PUBLIC LAND SURVEY CORNER CERTIFICATE

LAND SURVEY MONUMENTS SITUATED IN SECTION 9, TOWNSHIP 84
NORTH, RANGE 1 WEST OF THE 5TH P.M., JONES COUNTY, IOWA

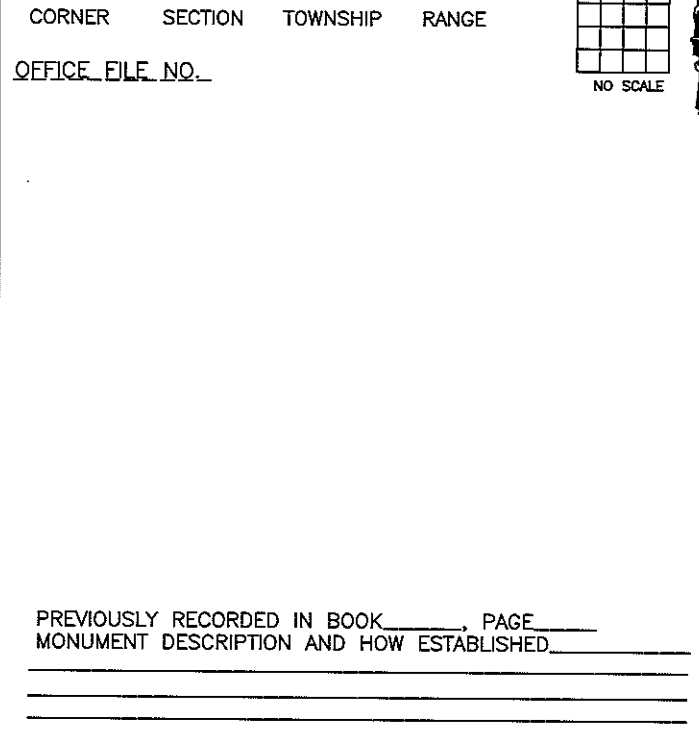
CORNERS TO BE INDEXED



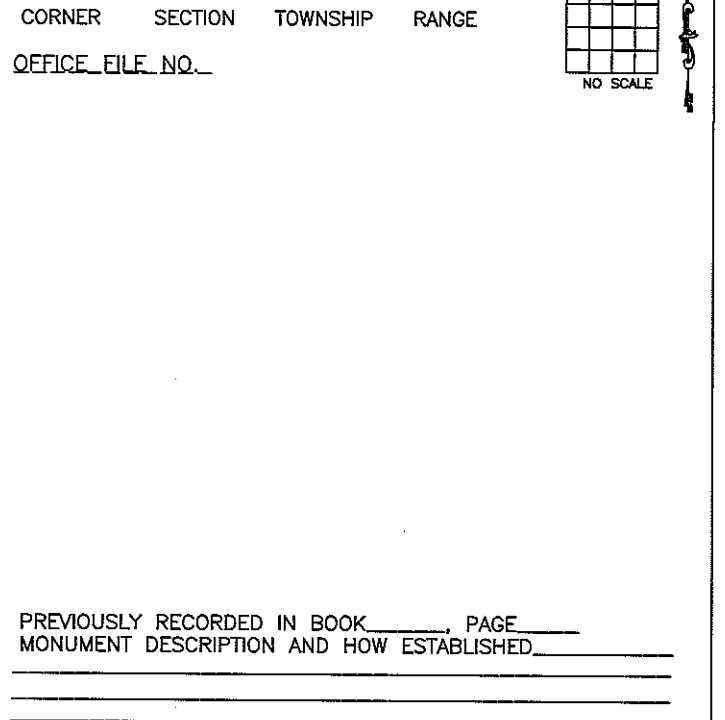
CORNERS TO BE INDEXED




CORNERS TO BE INDEXED



CORNERS TO BE INDEXED

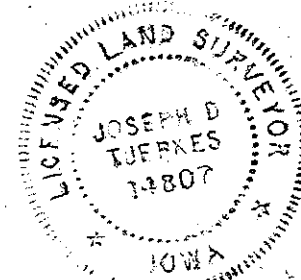


I hereby declare that this plat, survey or report was made by me or under my direct personal supervision and that I am a duly registered Land Surveyor under the laws of the State of Iowa.

Signed:  1-9-07

Joseph D. Tjepkes L.S. Iowa Reg. No. 14807
My Registration Renewal Date is December 31, 2008

SEAL



J.D. TJEPKES LS 14807
JONES COUNTY
ENGINEER'S OFFICE

19501 HWY. 64,
ANAMOSA, IOWA,
52205 (319)462-3785

THIS IS NOT A CERTIFICATION

JONES COUNTY ENGINEER'S OFFICE, 19501 HWY. 64, ANAMOSA, IOWA, 52205 (319)462-3785

UNITED STATES PUBLIC LAND SURVEY CORNER CERTIFICATE

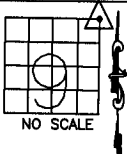
LAND SURVEY MONUMENTS SITUATED IN SECTION 9, TOWNSHIP 84
NORTH, RANGE 1 WEST OF THE 5TH P.M., JONES COUNTY, IOWA

CORNERS TO BE INDEXED

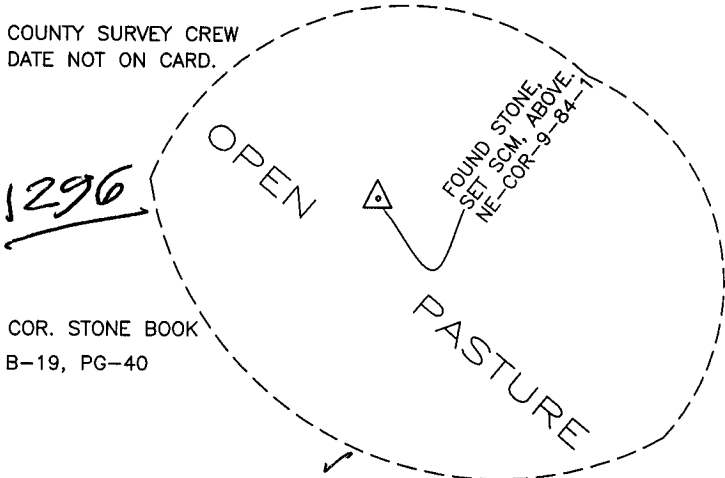
CORNER SECTION TOWNSHIP RANGE
NORTHEAST 9 84N 1W

OFFICE FILE NO.

84109e_011204.jpg



COUNTY SURVEY CREW
DATE NOT ON CARD.



COR. STONE BOOK
B-19, PG-40

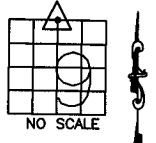
PREVIOUSLY RECORDED IN BOOK _____, PAGE _____
MONUMENT DESCRIPTION AND HOW ESTABLISHED FOUND
STONE 2.5' BELOW SURFACE. SET STANDARD CONCRETE MONUMENT
OVER STONE. CORNER SET IN OPEN PASTURE. NO TIES ON CARD.
NORTHEAST CORNER OF SECTION 9, TOWNSHIP 84 NORTH, RANGE 1
WEST OF THE 5TH PRINCIPAL MERIDIAN, JONES COUNTY, IOWA.

CORNERS TO BE INDEXED

CORNER SECTION TOWNSHIP RANGE
N-QUARTER 9 84N 1W

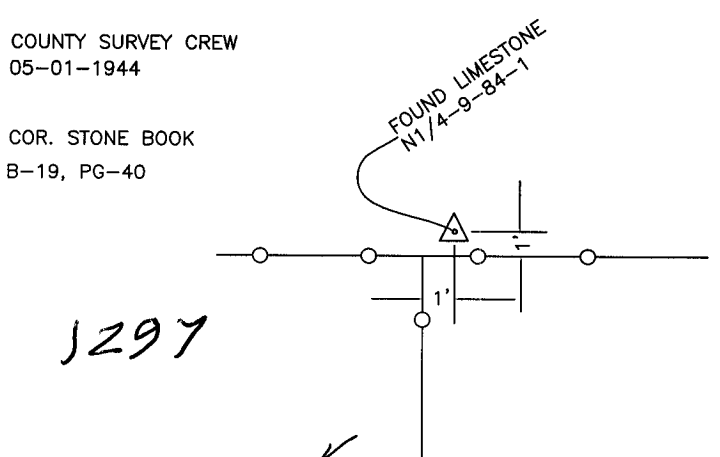
OFFICE FILE NO.

84109c_011204.jpg



COUNTY SURVEY CREW
05-01-1944

COR. STONE BOOK
B-19, PG-40



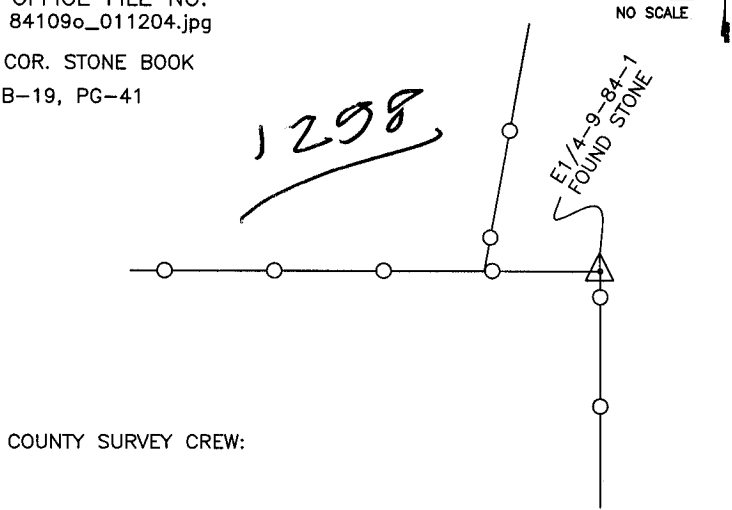
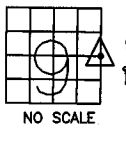
PREVIOUSLY RECORDED IN BOOK _____, PAGE _____
MONUMENT DESCRIPTION AND HOW ESTABLISHED
FOUND LIMESTONE, MAY 1, 1944, 1' NORTH AND 1' EAST OF FENCE
CORNER, NORTH QUARTER CORNER OF SECTION 9, TOWNSHIP 84
NORTH, RANGE 1 WEST OF THE 5TH PRINCIPAL MERIDIAN, JONES
COUNTY, IOWA. TIES AS INDICATED.

CORNERS TO BE INDEXED

CORNER SECTION TOWNSHIP RANGE
E-QUARTER 9 84N 1W

OFFICE FILE NO.

84109o_011204.jpg
COR. STONE BOOK
B-19, PG-41



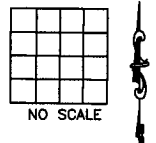
COUNTY SURVEY CREW:

PREVIOUSLY RECORDED IN BOOK _____, PAGE _____
MONUMENT DESCRIPTION AND HOW ESTABLISHED
FOUND STONE NORTH SIDE OF FENCE POST. FENCE SOUTH & WEST.
EAST QUARTER CORNER OF SECTION 9, TOWNSHIP 84 NORTH, RANGE
1 WEST OF THE 5TH PRINCIPAL MERIDIAN, JONES COUNTY, IOWA.

CORNERS TO BE INDEXED

CORNER SECTION TOWNSHIP RANGE

OFFICE FILE NO.



PREVIOUSLY RECORDED IN BOOK _____, PAGE _____
MONUMENT DESCRIPTION AND HOW ESTABLISHED _____

~~I hereby declare that this plat, survey or report was made by me or under my direct personal supervision and that I am a duly registered Land Surveyor under the laws of the State of Iowa.~~

Signed: _____

SEAL

JONES COUNTY
ENGINEER'S OFFICE

19501 HWY. 64,
ANAMOSA, IOWA,
52205 (319)462-3785